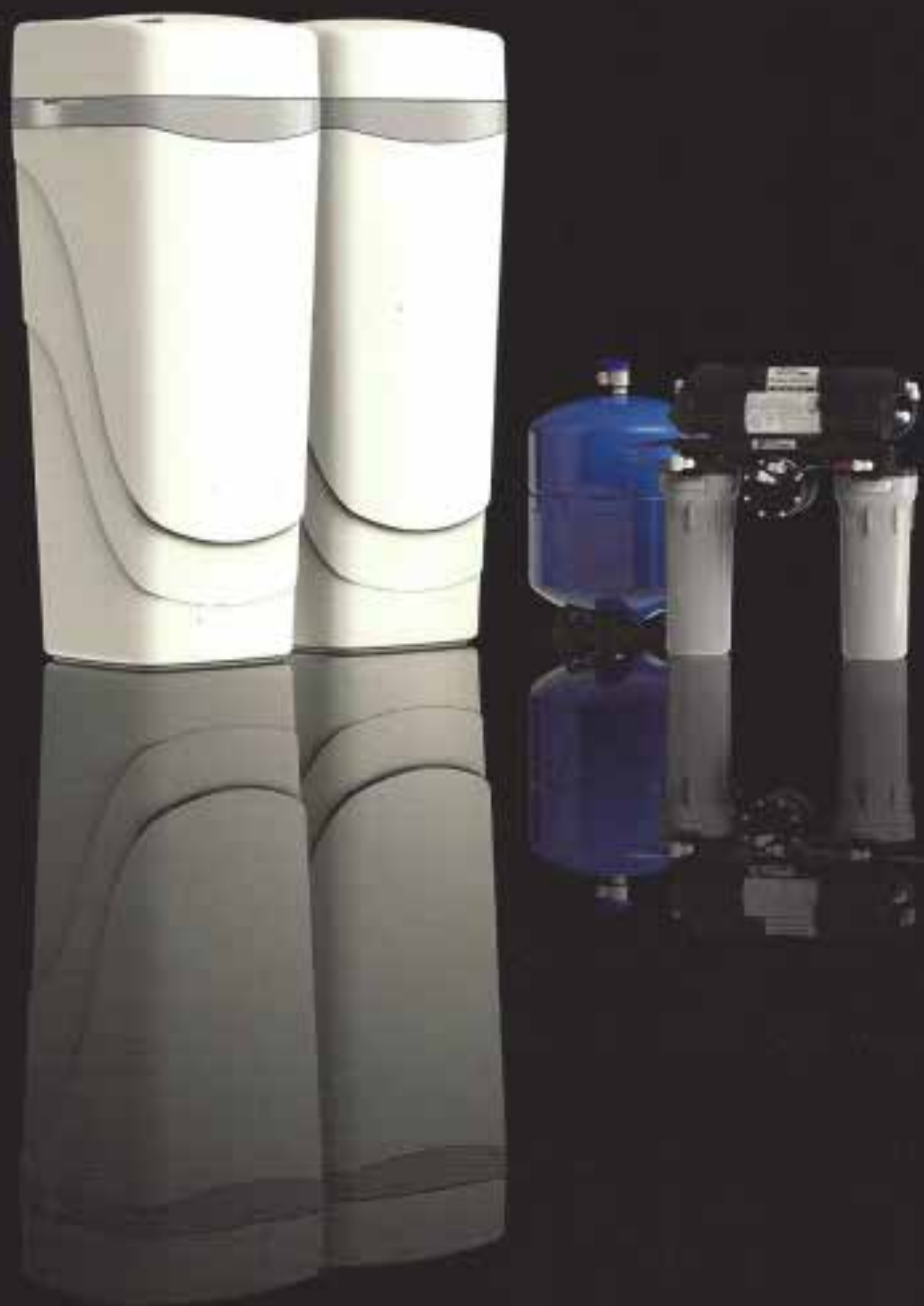


MAXPACK



HAGUE
Quality Water International®

ABOUT US

Family Owned Since 1960

State-of-the-Art Manufacturing Facility

Made in the USA

Every Unit Tested

WQA Certified

Industry Leading Warranty

Distributed Worldwide



KEY FEATURES

Smart Touch Controller

Patented Control Valve

Built-In Bypass

Patented Tank Design

Self-Cleaning Filter

Safety Shut-Off

25 Year Limited Warranty



SMART TOUCH CONTROLLER

Full Color 3.25" Touch Screen

Do Not Disturb Mode

Power Loss Protection

Absolute Brining

Capacity Guard

Calculates Hardness

Low Voltage Requirements

PATENTED CONTROL VALVE

Patented Design

Built-In Bypass

Corrosion Resistant Construction

1" Valve

Blending Valve

Test Port

Hydroslides on Piston

MEDIA CABINET



BUILT-IN BYPASS

SMART TOUCH CONTROLLER

BAFFLE

COMPARTMENT #1

COMPARTMENT #2

COMPARTMENT #3

BRINE CABINET



SAFETY SHUT-OFF

BRINE WELL

AIR CHECK

GRID PLATE

CONVENTIONAL VS. WATERMAX®



Conventional water treatment units have a design flaw that leads to water channeling or tunneling. The result is wasted media.

This outdated design also does not have the flexibility to be fully customized for your specific water solution. The result could be multiple units to treat your water.



The WaterMax® is engineered with a baffle and distribution screens that distribute the water evenly through the tank to prevent water channeling.

Three separate compartments allow the WaterMax® to be customized for your specific water treatment solution.

Every unit has a built-in, self-cleaning filter. This value added feature saves you time, money, and labor on filter replacements.

The result is the most efficient water treatment system on the market today.

**Built-In, Self Cleaning Filter Saves Time,
Money, & Labor on Filter Replacements**

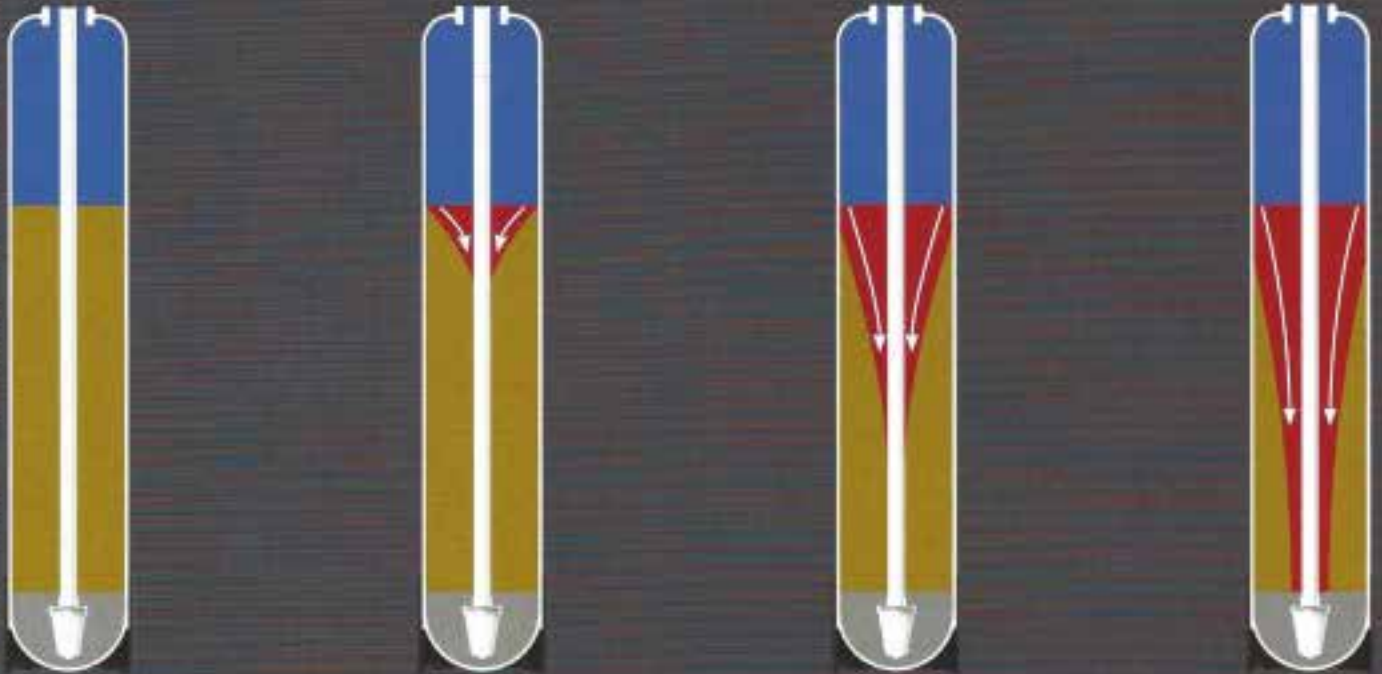


Up to 80% Less Time
Up to 50% Less Regenerant
Up to 80% Less Water

Directional Flow Screens
Up Flow Brining
Packed Resin Bed

CONVENTIONAL

Channeling or Tunneling Leads to Wasted Media.



Water



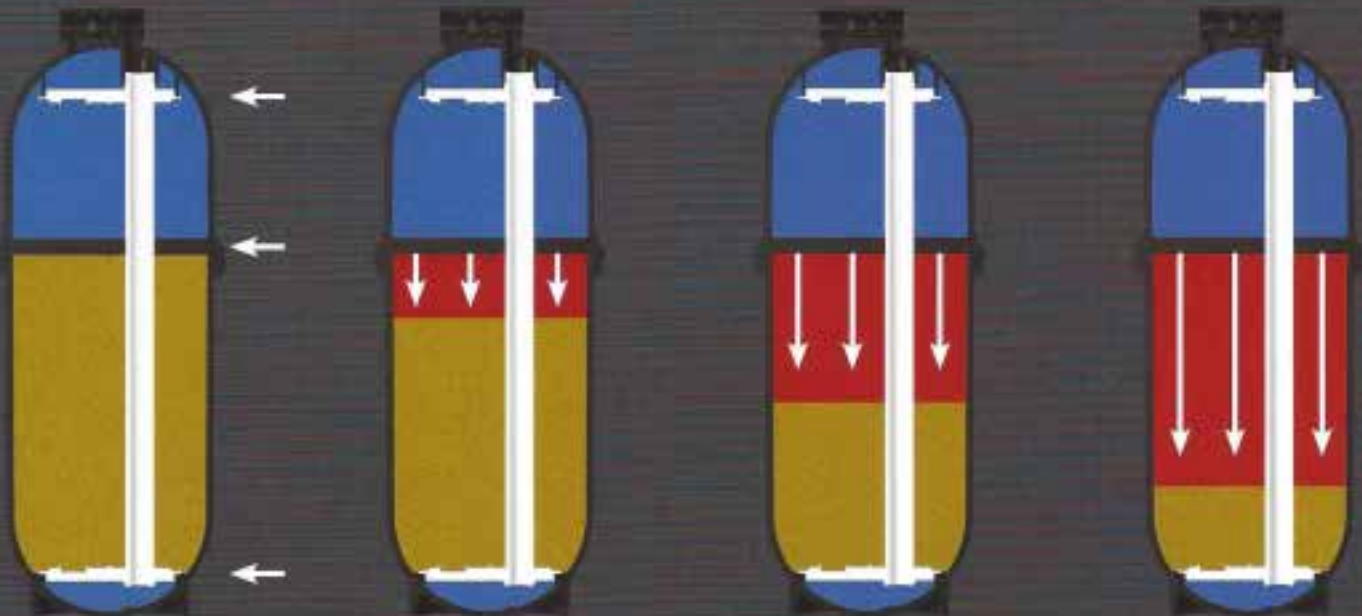
Regenerated Media



Exhausted Media

WATERMAX®

Directional Flow Screens Distribute Water Evenly Through Tank and Media.



5 STAGE REVERSE OSMOSIS

Our 5 stage reverse osmosis unit features a non-electric permeate pump that fills the storage tank five times faster than a conventional RO unit.

No More Bottled Water

Maintains Water Pressure Within 5 lbs. of Line Pressure.

5 Times Faster Than a Conventional RO Unit.

Non-Electric Operation

PERMEATE PUMP

PROLONGED CONTACT FILTER

MEMBRANE



STORAGE TANK

CARBON POST FILTER

DUAL FUNCTION PRE-FILTER

 H6500

H6500 Reduction

| Substance | % | Substance | % |
|---------------|-------|------------------|-------|
| Arsenic (+5)* | 99.6% | Fluoride | 97.7% |
| Barium | 98.8% | Lead | 99.3% |
| Cadmium | 98.8% | Radium (226/228) | 80.0% |
| Chromium (+6) | 99.1% | Selenium | 94.0% |
| Chromium (+3) | 99.7% | TDS | 96.8% |
| Copper | 99.0% | Nitrate/Nitrite | 91.2% |

Additional Compounds Reduced

| | | |
|-----------------------------|-----------------------------|---------------------------|
| alachlor | endrin | pentachlorophenol |
| atrazine | ethylbenzene | simazine |
| benzene | ethylene dibromide (EDB) | styrene |
| carbofuran | haloacetonitriles (HAN) | 1,1,2,2-tetrachloroethane |
| carbon tetrachloride | bromochloroacetonitrile | tetrachloroethylene |
| chlorobenzene | dibromoacetonitrile | toluene |
| chloropicrin | dichloroacetonitrile | 2,4,5-TP (silvex) |
| 2,4-D | trichloroacetonitrile | tribromoacetic acid |
| dibromochloropropane (DBCP) | haloketones (HK) | 1,2,4-trichlorobenzene |
| o-dichlorobenzene | 1,1-dichloro-2-propanone | 1,1,1-trichloroethane |
| p-dichlorobenzene | 1,1,1-trichloro-2-propanone | 1,1,2-trichloroethane |
| 1,2-dichloroethane | heptachlor (H-34, Heptox) | trichloroethylene |
| 1,1-dichloroethylene | heptachlor epoxide | trihalomethanes |
| cis-1,2-dichloroethylene | hexachlorobutadiene | chloroform |
| trans-1,2-dichloroethylene | hexachlorocyclopentadiene | bromoform |
| 1,2-dichloropropane | lindane | bromodichloromethane |
| cis-1,3-dichloropropylene | methoxychlor | chlorodibromomethane |
| dinoseb | | xylenes |



SEE THE DIFFERENCE



FEEL THE DIFFERENCE



TASTE THE DIFFERENCE



SAVE THE DIFFERENCE

Figures based upon the average family of 4 with an average water hardness of 10 grains per gallon.

| | Savings | Monthly | | Yearly | |
|-------------------------|---------|-----------------|-----------------|----------------|-------------------|
| | | Spending | Savings | Spending | Savings |
| Bottled Water | 100% | \$33.33 | \$33.33 | \$400.00 | \$400.00 |
| Soaps | 75% | \$10.42 | \$7.81 | \$125.00 | \$93.75 |
| Cleaning Products | 75% | \$50.00 | \$37.50 | \$600.00 | \$450.00 |
| Hot Water Usage | 20% | \$41.67 | \$8.33 | \$500.00 | \$100.00 |
| Plumbing and Appliances | 75% | \$10.00 | \$7.50 | \$120.00 | \$90.00 |
| Clothing and Linens | 30% | \$43.75 | \$13.13 | \$525.00 | \$157.50 |
| Totals | | \$189.17 | \$107.60 | \$2,270 | \$1,291.25 |

\$12,910
Potential
10 Year
Savings!

Sources:
Water Quality Association - www.wqa.org
NSF International - www.nsf.org
U.S. Department of Labor
U.S. Department of Commerce
National Bureau of Standards
U.S. Geological Survey



Established in 1960 from humble beginnings, Hague Quality Water is the oldest major water treatment manufacturer in the U.S.A. under continuous family ownership.

William R. Hague began his entrepreneurial journey in 1960 with just a blank piece of paper and a vision. Over fifty years later, his vision has been realized and the blank paper replaced by countless accolades touting his company's contributions to the water treatment industry, numerous awards, and recognition for multiple cutting edge technological patents and product designs.